



## ODC series Connector

### Product Overview

ODC outdoor waterproof connector with screw locking mechanism to ensure safe and reliable connection, the design guide pins, you can use one hand blind mating connector installation simple and quick to do. Products reach the level of protection IP67 waterproof, waterproof, dust protection and anti-corrosion protection can be well suited for outdoor use environments. ODC light cable assembly can be customized according to actual needs into different cable lengths and connector combinations, all standard fiber optic connectors (e.g. LC, SC, etc.) can be connected.

ODC specifications are: 2 core, 4 core, 6-core, 8-core. Mainly used: outdoor harsh environment fiber optic communications, pulling away communication base stations, intelligent substation, military communications equipment, railway signal control, mines and other harsh environments.

### Products Pics & Ordering Info



2 fiber plug (ODC02P)



2 fiber socket (ODC02FS)



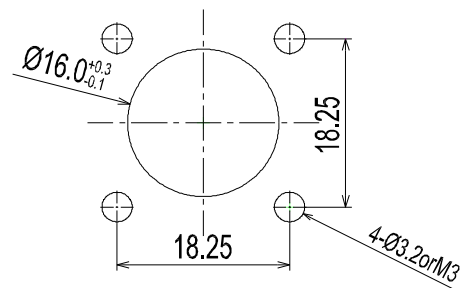
4 fiber plug (ODC04P)



4 fiber socket (ODC04FS)

### Connector Parameter

Insertion Loss	SM	$\leq 0.7\text{dB}$ (Typical $\leq 0.5\text{dB}$ )
	MM	$\leq 0.5\text{dB}$ (Typical $\leq 0.2\text{dB}$ )
Return Loss	SM	$\geq 50\text{dB}$
Mechanical	Plug	$\leq 500\text{N}$ (Main Cable)
	Socket	$\leq 30\text{N}$ (Branch Cable)
Operation Temp.		$-40^{\circ}\text{C} \sim 85^{\circ}\text{C}$
IP Rate		IP68





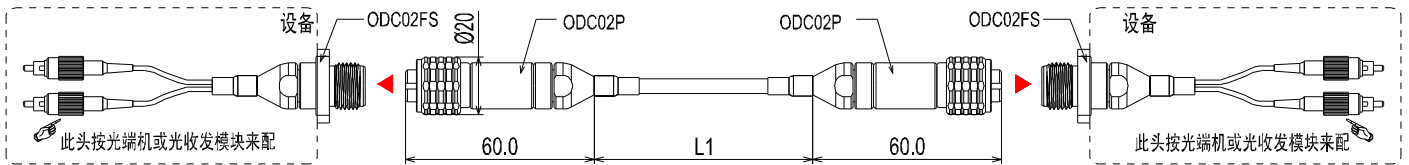
### Cable Parameter

Cable OD.	5.0mm
Outer Sheath	PVC or TPU
Anti-push Unit	KEVLAR
Fiber Type	9/125、50/125、62.5/125
Fiber Outer	900um fiber
Tensile Strength	Short term: 600N/ Long term: 200N

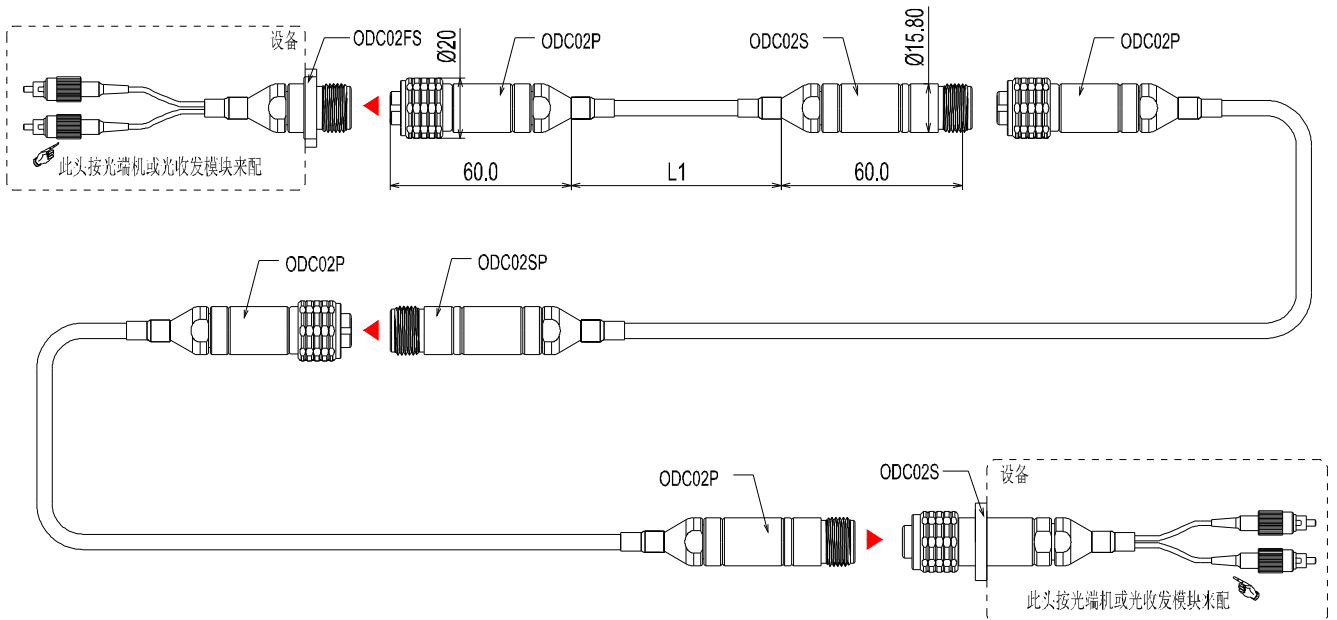
### Branch Connector



### Connection Drawing



Two equipment Link connection drawing



Two equipment Link connection extending Drawing